



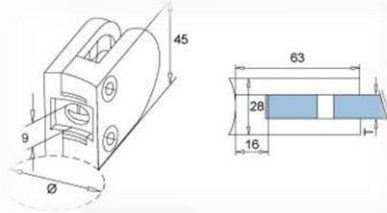
Stainless Steel Handrail Fittings

Image (Our Stock
Satin Finish)

Dimensional Info

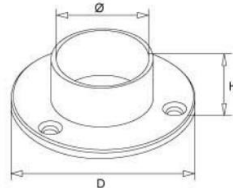
Petrochem
Item Code

Item
Description



R07HRGC316S200

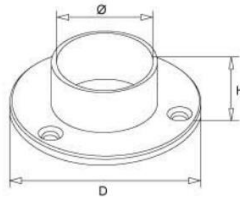
Glass Clamps-Medium
"D" Wide Type to suit
50.8 Tube AISI316L
Satin Finish to suit
8mm/10mm/12mm
Glass



R07HR2016S

Base Plate 102x31 50.8
AISI316L Satin finish

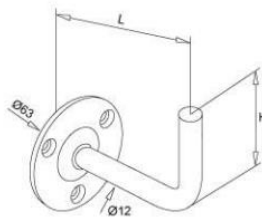
Ø	DxH
(mm)	(mm)
50.8	102x31



R07HR1516S

Base Plate 76x25 38.1
AISI316L Satin finish

Ø	DxH
(mm)	(mm)
38.1	76x25



R07HR2028S

Handrail Support
without radiused top
AISI316L Satin Finish
H=58 L=75

L	H
(mm)	(mm)
85	58

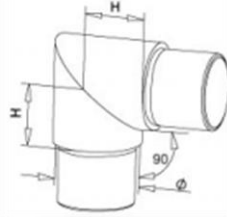


Image (Our Stock
Satin Finish)

Dimensional Info

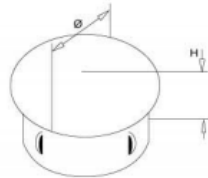
Petrochem
Item Code

Item
Description



R07HR2002S

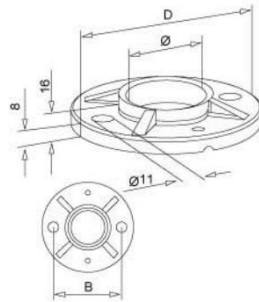
Acute Elbow AISI316L
Satin finish



R07HR2016S

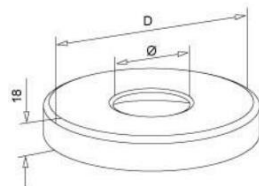
End Cap "Light Knock-In"
AISI316L Satin Finish
50.8x1.5

Ø	H
(mm)	(mm)
50.8x1.5	8



R07HRFCP316200

Post-Base Plate
AISI316L Raw 50.8
105mm



R07HR2028S

Cover Plate 50.8
AISI316L Satin Finish

Ø	D
(mm)	(mm)
50.8	Ø110

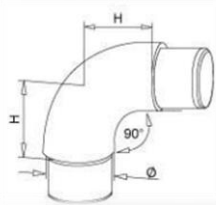


Image (Our Stock
Satin Finish)

Dimensional Info

Petrochem
Item Code

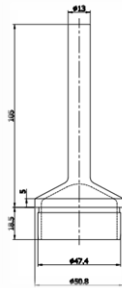
Item
Description



R07HR2001S

Flush Joiner "90 Degree"
Radiused AISI316L Satin
Finish 50.8x1.5

Ø	H
(mm)	(mm)
50.8x1.5	41



R07HR2721SP

Rail Support without
Saddle (as same as the
sample) AISI316L Satin
Finish

For more information email us:

sales@petrochem.ie

dunboyne@petrochem.ie

Or call us:

[+353 21 4351300/ 1 8026020](tel:+353214351300)