



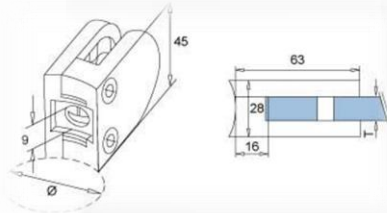
## Stainless Steel Handrail Fittings

Image ( Our Stock  
Satin Finish)

Dimensional Info

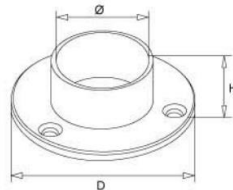
Petrochem  
Item Code

Item  
Description



R07HRGC316S200

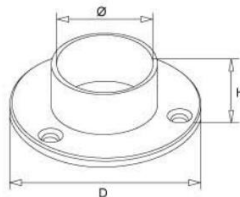
Glass Clamps-Medium  
"D" Wide Type to suit  
50.8 Tube AISI316L  
Satin Finish to suit  
8mm/10mm/12mm  
Glass



R07HR2016S

Base Plate 102x31 50.8  
AISI316L Satin finish

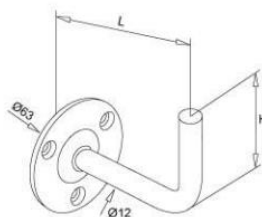
Ø	DxH
(mm)	(mm)
50.8	102x31



R07HR1516S

Base Plate 76x25 38.1  
AISI316L Satin finish

Ø	DxH
(mm)	(mm)
38.1	76x25



R07HR2028S

Handrail Support  
without radiused top  
AISI316L Satin Finish  
H=58 L=75

L	H
(mm)	(mm)
85	58

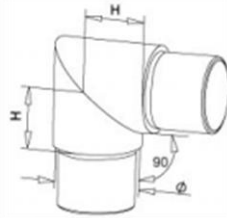


Image ( Our Stock  
Satin Finish)

Dimensional Info

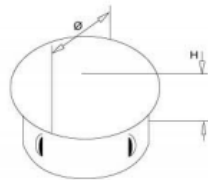
Petrochem  
Item Code

Item  
Description



R07HR2002S

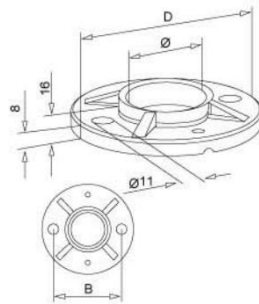
Acute Elbow AISI316L  
Satin finish



R07HR2030S

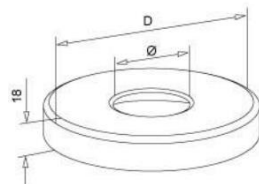
End Cap "Light Knock-In"  
AISI316L Satin Finish  
50.8x1.5

Ø	H
(mm)	(mm)
50.8x1.5	8



R07HRFCP316200

Post-Base Plate  
AISI316L Raw 50.8  
105mm



R07HRCP316200

Cover Plate 50.8  
AISI316L Satin Finish

Ø	D
(mm)	(mm)
50.8	Ø110

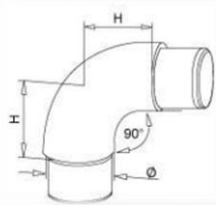


Image ( Our Stock  
Satin Finish)

Dimensional Info

Petrochem  
Item Code

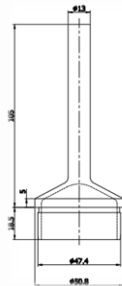
Item  
Description



R07HR2001S

Flush Joiner "90 Degree"  
Radiused AISI316L Satin  
Finish 50.8x1.5

Ø	H
(mm)	(mm)
50.8x1.5	41



R07HR2721SP

Rail Support without  
Saddle (as same as the  
sample) AISI316L Satin  
Finish

For more information email us:

[sales@petrochem.ie](mailto:sales@petrochem.ie)

[dunboyne@petrochem.ie](mailto:dunboyne@petrochem.ie)

Or call us:

[+353 21 4351300/ 1 8026020](tel:+353214351300)